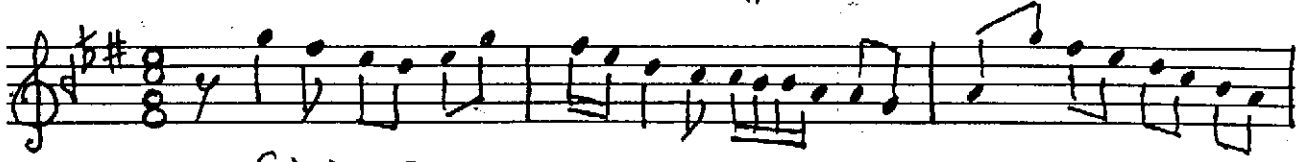


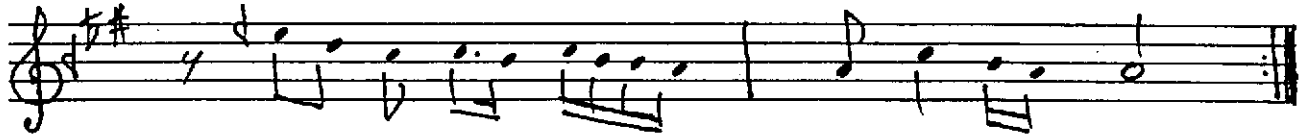
Düyle

KARCIĞAR ŞARKI
(Gönüldür bu sevgilim)

Söz - Beste: ZİYA ALŞAN



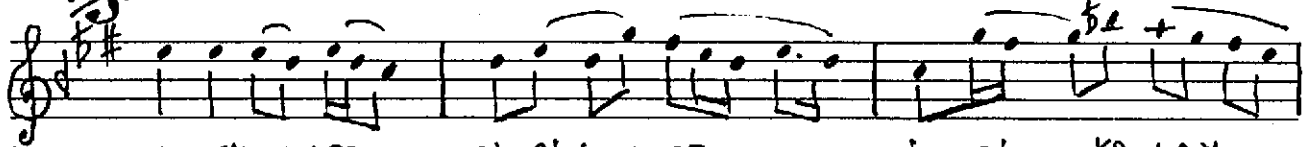
Giriş Sazı



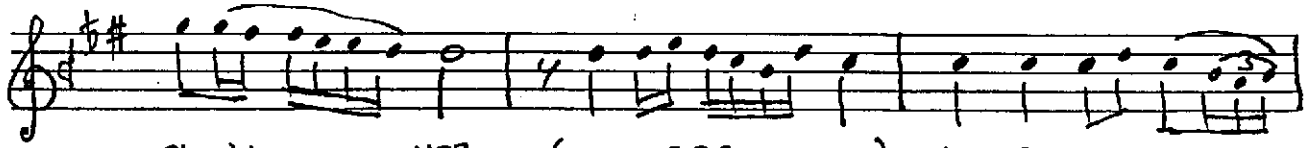
GÖNÜL -- DÜR BU -- SEV Gİ ÜM NE LER YA PAR



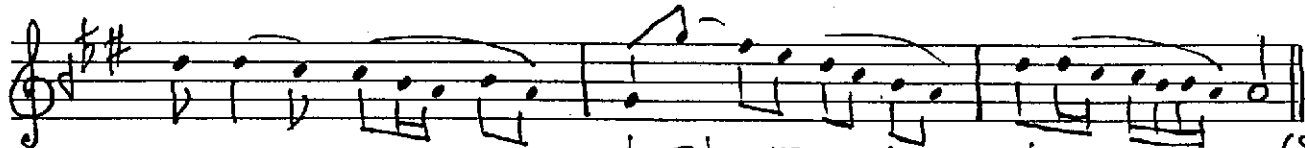
Bİ LİN -- MEZ (- saz - -) (- saz - -)



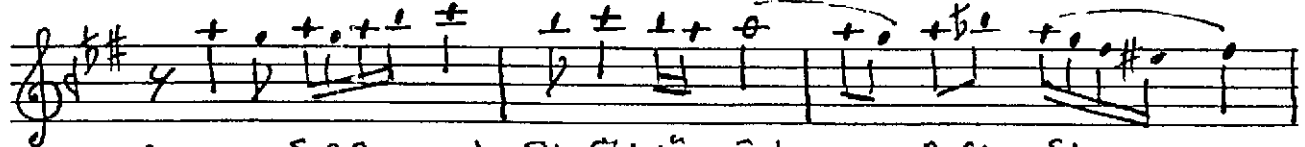
AŞK BİR KALBE Gİ RİN CE - - İ Zİ -- KO LAY



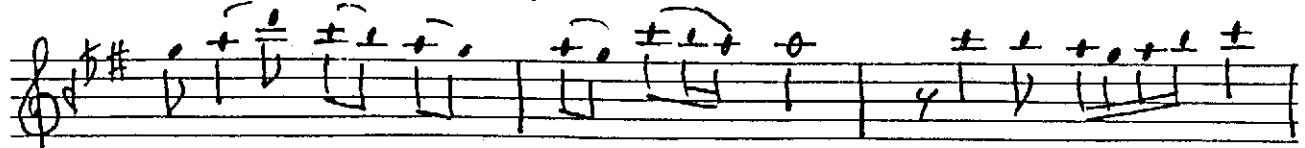
Sİ LİN -- MEZ (- saz -) AŞK BİR KAL BE --



Gİ RİN CE - - İ Zİ KO LAY - Sİ LİN -- MEZ (SON)



(- saz -) ŞU GÖNÜ - MÜN -- A CI Sİ - -



İ NAN SEN SİZ HIÇ DİN MEZ (- saz - -)

ŞU GÖNÜMÜN - - ACISI - - İNAN SEN SİZ

HİÇ DİNMEZ . (- SÖZ - - -)

~~GÖNÜLÜM BU SEVGİİM NELEK ZAPAR BİTİRMEZ~~
~~AŞK BİR KALBE GİRİNCE İZİ KOLAY SİLİNMEZ~~
~~ŞU GÖNÜMÜN ACISI İNAN SENSİZ HİÇ DİNMEZ~~
~~AŞK BİR KALBE GİRİNCE İZİ KOLAY SİLİNMEZ~~